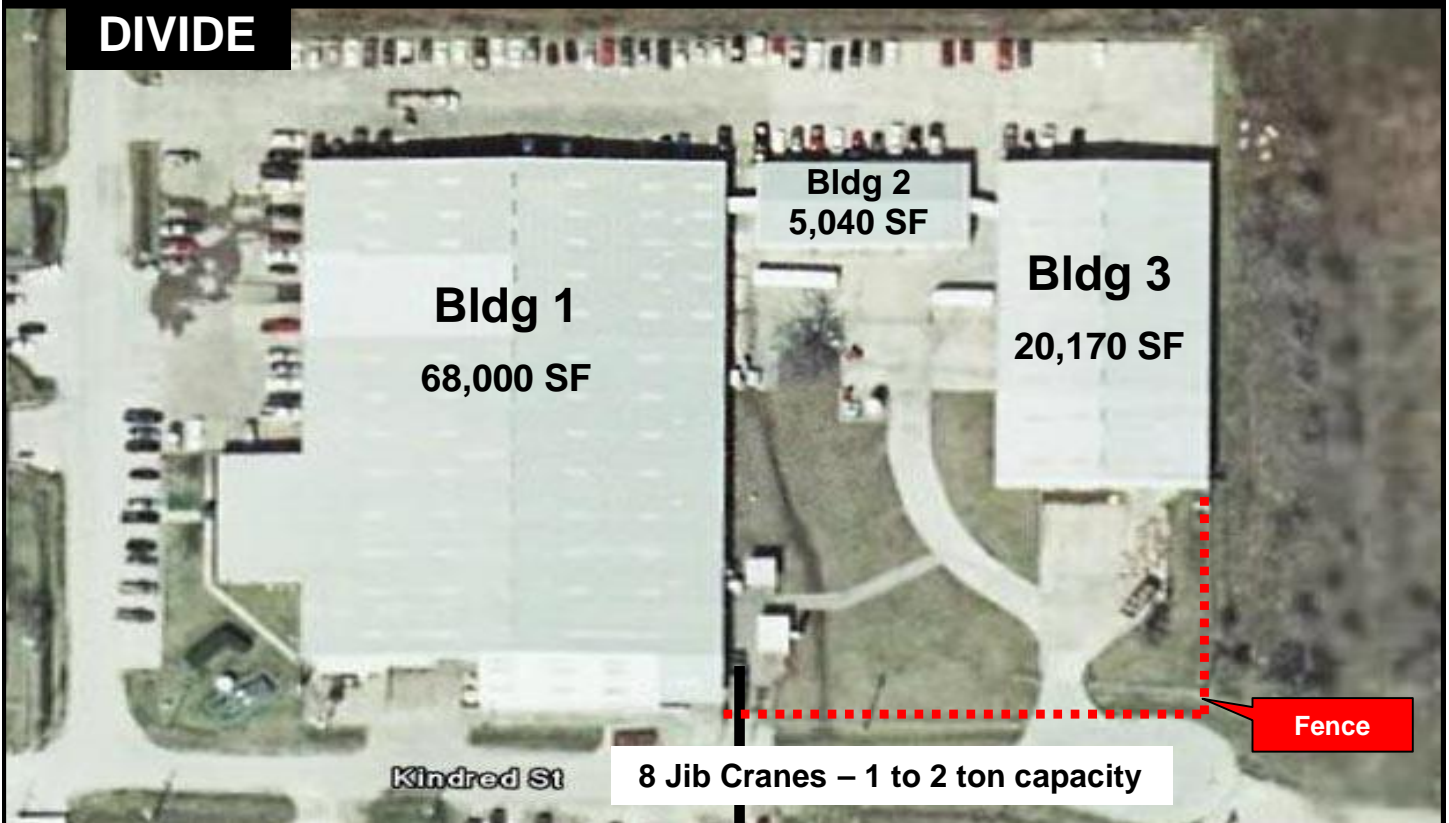


93,210 SF Eastside Office Warehouse

1977 Kindred St. • Houston, TX 77049

**WILL
DIVIDE**



For Lease: \$.37 PSF, IG or For Sale: \$2,550,000

± 93,210 Total Square Feet

- Bldg 1: 68,000 SF with 3,000 SF Office
5 Dock High, 7 Grade Level O/H Doors
- Bldg 2: 5,040 SF Office
- Bldg 3: 20,170 SF with 900 SF Office
2 Dock High, 2 Grade Level O/H Doors
- 5.0 Acre Site with Fenced Yard
- Bldg 1: 3-Phase, 2000 Amps
- Bldg 3: 3-Phase, 600 Amps
- Key Map 456L • 1977 Construction
- [Outside Houston City Limits!!!](#)



Capital Real Estate Commercial, Inc.

www.credtexas.com

7720 Westview Drive • Houston, TX 77055
Phone (713) 681-1100 • Fax (713) 681-1114

Hart (713) 907-3570
hschleicher@credtexas.com
Richard (281) 932-9414
rrolland@credtexas.com





Building 3
20,170 SF
Warehouse

with fully equipped welding shop